

# Parkheath

*Sold on Service*

---

**Adelaide Road NW3**  
**£1,625 PCM (£375 per week)**

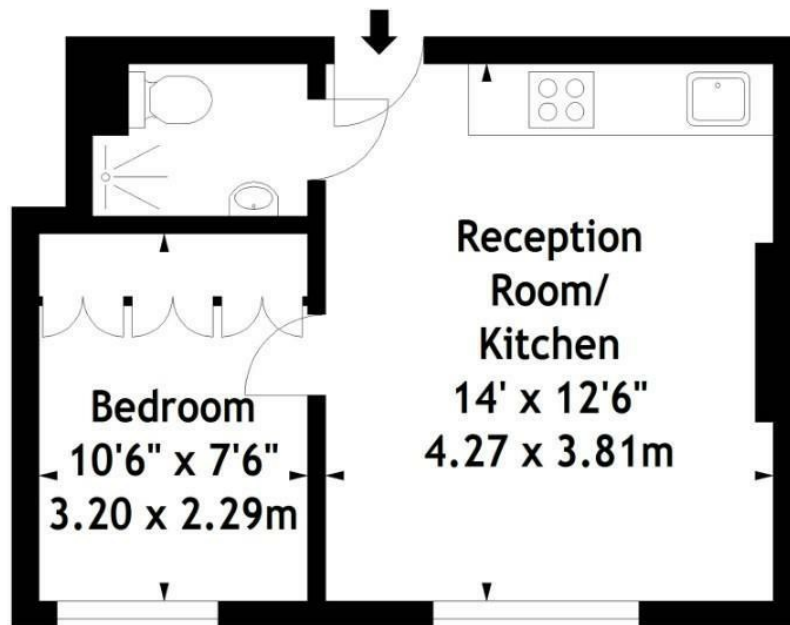


Bright and modern 1 bedroom apartment  
To be newly decorated  
Kitchen with washing machine  
Moments to Primrose Hill village

1st floor in period conversion  
Wood floors throughout  
Fitted wardrobe in bedroom  
Situated opposite Chalk Farm tube

Belsize Park Office 020 7431 1234

Adelaide Road, NW3  
Approx. Gross Internal Area  
300 Sq Ft - 27.87 Sq M



## First Floor

Measured in accordance with RICS guidelines. Every attempt is made to ensure accuracy, however all measurements are approximate. This floor plan is for illustrative purposes only and is not to scale.

© Datography Ltd 2015

Photographs \* Floorplans \* Virtual Tours  
Tel: 0845 643 4401 [www.datography.com](http://www.datography.com)

The particulars do not constitute part of an offer or contract. The particulars, including text, photographs and plans, are for the guidance only of prospective purchasers/tenants and must not be relied upon as statements of fact. The descriptions provided therein represent the opinion of the author and whilst given in good faith should not be construed as statements of fact. Nothing in these particulars shall be deemed a statement that the property is in good condition or otherwise or that any services or facilities are in good working order. All measurements are approximate